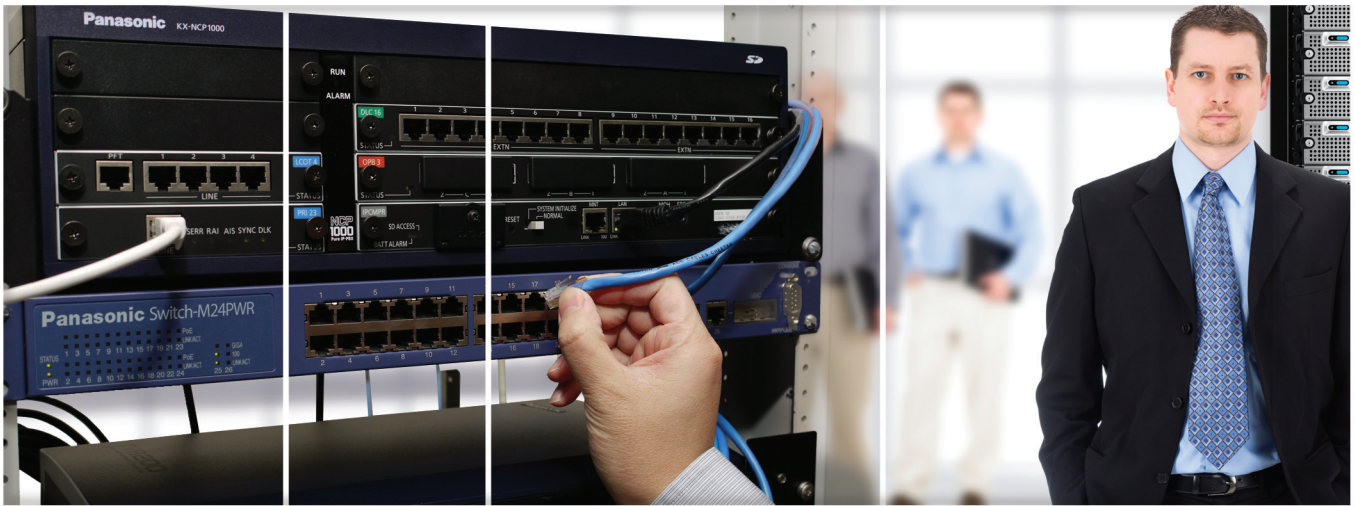


# Power over Ethernet (PoE) 24-Port Switch

MN23249K

Enhanced Communications Solutions



- Enables one-stop shopping for current owners of Panasonic business communications equipment
- Automatically recognizes and prioritizes Panasonic PBX and related products
- Easy-to-use web-based configuration tool
- Easy VLAN setup at the switch level
- Automatic QoS setting at the switch level rather than the phone level PBX
- MTBF (Mean Time Between Failure) under 77°F - 216,178 Hours (or about 25 yrs.)

**Panasonic ideas for life**

# MN23249K Specifications

<b>Standard Port Number (UTP RJ45)</b>	10/100Mbps (Port 1-24)	<b>L2 Switching</b>	Link Aggligation	
	10/100/1000Mbps (Port 25, 26)		Port Mirroring	
<b>Extend Slot Number</b>	SFP		Flow Control (802.3x)	
<b>Console Port</b>	RJ45		Flow Control (Back Pressure)	
<b>Extend Slot Module (Option)</b>	1000BASE-SX SFP Module		Spanning Tree (802.1d)	
	1000BASE-LX SPF Module		Spanning Tree (802.1w)	
	LX40 SFP Module		Spanning Tree (MSTP 802.1s)	
<b>Port Specification</b>	Auto Negotiation		IGMP Snooping	
	Auto MDI/MDI-X		IGMP Queror	
	Force MDI-X		Multicast Filtering	
	Fix the Speed		BPDU Guard	
	Fix the Half Duplex/Full Duplex		Storm Control	
	EAP Through		Ring Protocol	
<b>Performance</b>	14.8Gbps Switching Fabric		<b>VLAN</b>	Port Base VLAN
	1Mbyte Packet Buffer Size			802.1Q Tagged VLAN
	16K Mac Address Table		<b>QoS</b>	8 Priority Queues
	255 VLANs			COS Priority
<b>Dimensions</b>	Height - 1.73 in. (44 mm)		<b>Security</b>	DSCP Priority
	Width - 17.32 in. (440 mm)			IEEE802.1X PortBase
	Depth - 10.09 in. (256 mm)			IEEE802.1X MacBase
	Weight - 8.38 lbs. (3.8 kg)			Dynamic VLAN
<b>PoE Specification</b>	PoE enabled Ports are 1-24		<b>Management</b>	ACL
	802.3af	MacLearning OFF		
	Maximum Power Budget: 175 watts	Console Port		
	Power Supply Way is Alternative B	Web		
	Power Supply Priority	Telnet Server		
<b>Environment</b>	ROHS	EasyConfig for IP Setting		
	Operation Temp: 32°~104° F	Menu		
	Power Consumption: 242 watts	CLI		
	Fan Sensor	RMON		
	Internal Temp Sensor	SNMP v1		
	FCC Class A	SNMP v2c		
	UL Listed	System Log		
<b>Accessories</b>		Syslog Protocol		
		NTP(SNTP) Client		
		19-inch Rack Mount Bracket		
		Console Cable (sold separately)		

No AC Adaptor required for Panasonic IP devices such as network cameras, NT300/400 series IP phones and KX-NT700 IP Conference Phone, etc.

## Panasonic System Networks Company of America

Executive Offices:  
Three Panasonic Way, Secaucus, NJ 07094  
(201) 348-7000

[www.panasonic.com/ecs](http://www.panasonic.com/ecs)

## Panasonic Customer Service

9 am - 9 pm (EST) Mon. through Fri.  
10 am - 7 pm (EST) Sat. and Sun.  
1-800-211-PANA

[www.panasonic.com/support](http://www.panasonic.com/support)

For hearing or speech impaired TTY users, TTY 1-877-833-8855